



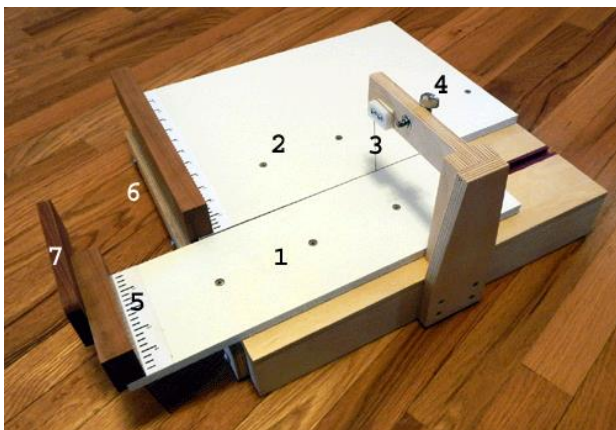
MARK III SLIDING TABLE SOAP CUTTER

Please read all instructions before cutting soap!

The Mark III uses a vertical wire between two sliding table to cut blocks into loaves, and loaves into bars. Soap is cut by placing the loaf, or block, across both in-feed table and out-feed table, and pushing the tables into the wire cutter. After the cut, the out-feed table is pulled back to remove the cut soap.

Features

- Dual sliding tables
- Inch scale on each table top
- Single push handle to move both tables when cutting
- Work area of 17" x 17" x 4 1/4"
- Table edge third hand stabilizer
- Extra cutting wire



Parts

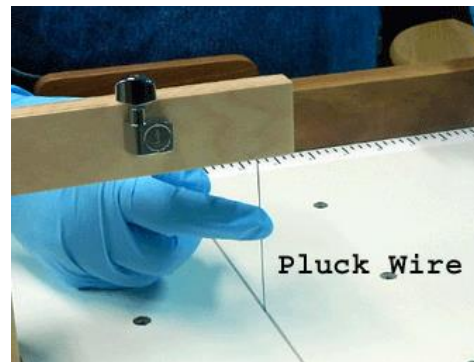
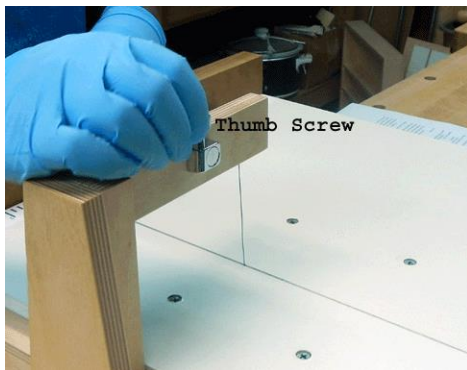
1. Out Feed Sliding Table
2. In Feed Sliding Table
3. Wire
4. Thumb Screw
5. Inch Marker
6. Table edge third hand stabilizer
7. Push Handle

Setup and Operation

1. Place the cutter on a flat table.
2. If the cutter slides on the table, install the table edge third hand stabilizer to help hold the cutter in place. Remove left and right screws. Pivot arm on center screw till third hand hangs below table. Replace left and right screws. Place third hand over edge of table.

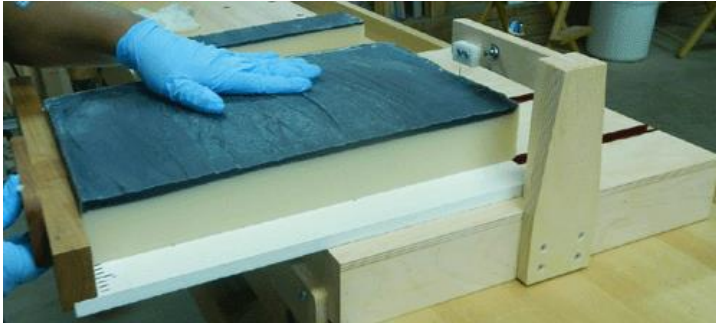


3. Tighten the wire. Using the thumb screw at the top of the cutter tighten the wire until tight. It produces a high pitch sound when plucked.



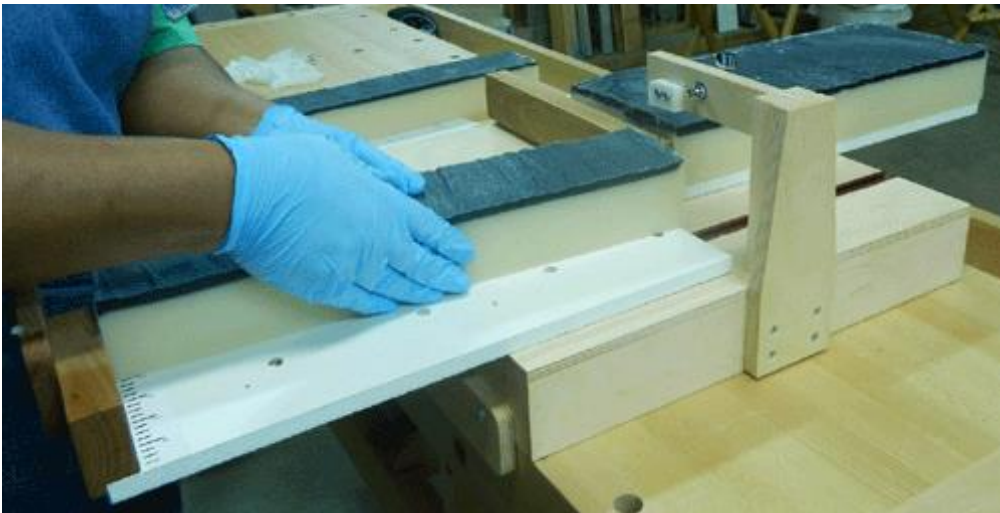
Cutting Soap

1. Pull the two tables back and place the soap slab across the two tables. Use the inch scale on the out-feed table as a guide for the cut width.

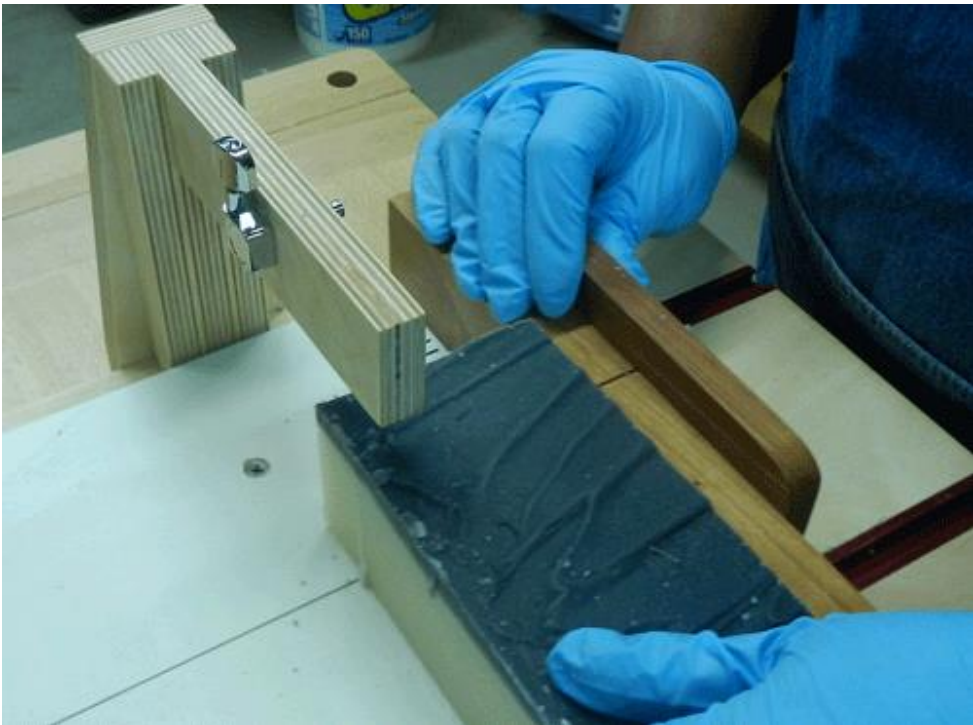


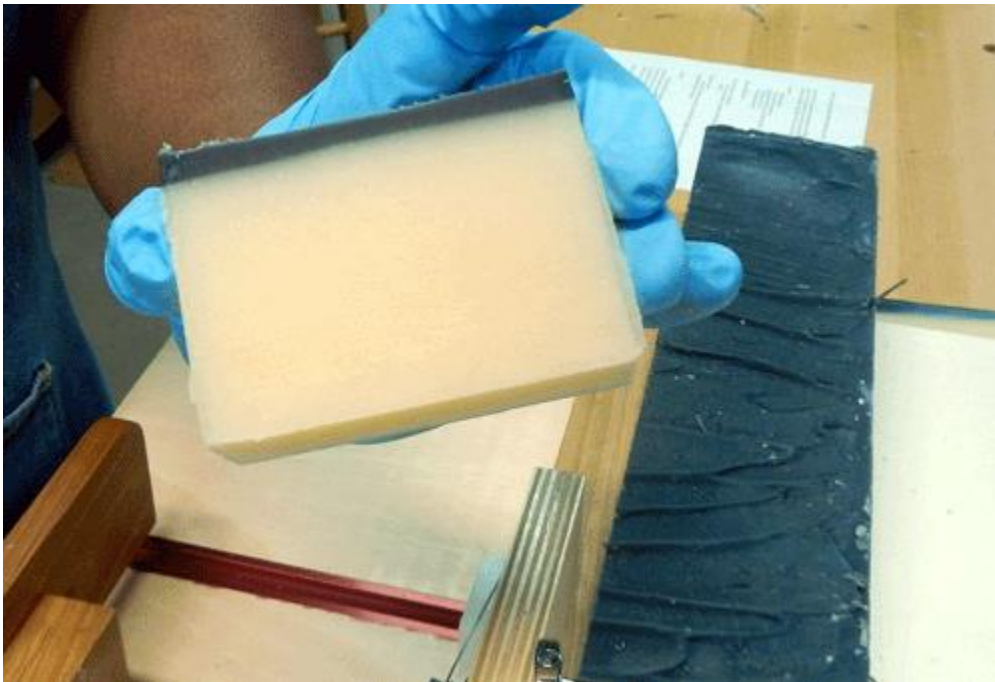
2. Using the handle on the out-feed table push both tables forward until the wire has passed through the soap and is between the back stops of the two tables. Now slide the out-feed table back and remove the cut soap.
3. Repeat the process until all the soap is cut. Clean the wire using a cloth between cuts if needed.











Clean Up and Storage

To clean, remove the two tables from the base and wipe down with a damp cloth. Clean the wire and base, using a damp cloth. All exposed wood is sealed, but not waterproof. Please wipe with a dry towel after cleaning. Loosen the wire with the thumb screw. Three or four turns of the thumb screw should remove the tension from the wire. With the table installed the Mark III may be stored on edge with wire at the top.

Design

Our soap cutter was designed for cutting cold process soap. It is important to cut partially cured soap. To soft a soap won't cut cleanly and your bars may become disfigured. Really hard soap is very difficult to cut through and can result in a broken wire. Wire cutters do not work well for M&P (melt and pour) soap. It is possible in some cases, if using a softer formula M&P and the soap is fairly new. We recommend using a blade cutter to cut M&P. No guarantees for M&P soap.